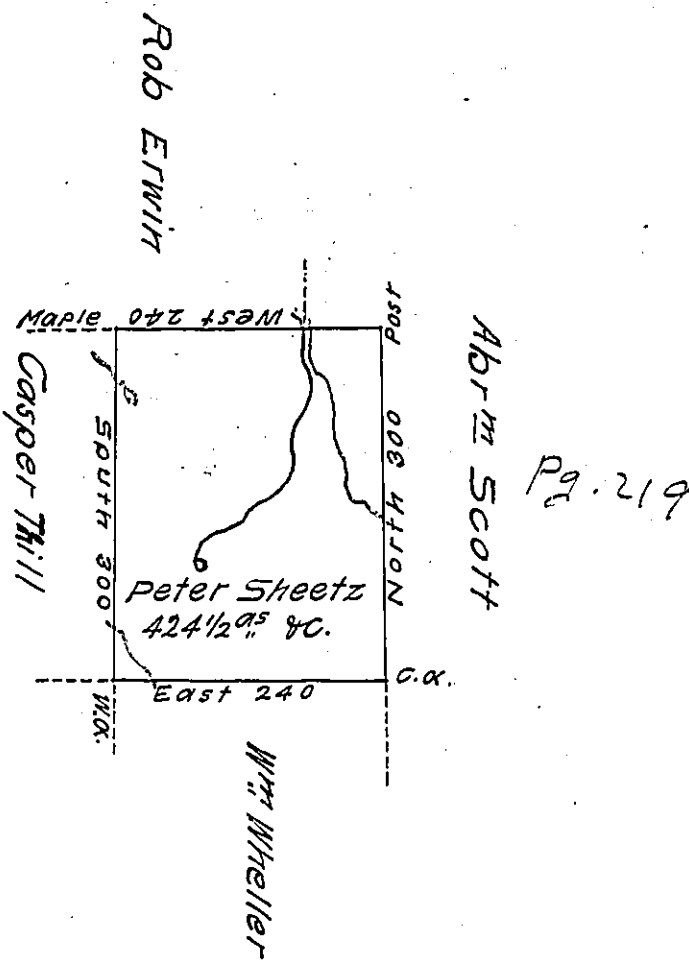


X



A draft of a tract of land called _____ situate in the County of Luzerne containing four hundred & twenty four acres 1/2 & allowance surveyed for Peter Sheetz the 22^d day of August 1793 by virtue of a warrant dated the 4th day of Jan^y 1793

by Wm Gray D.S.

To Daniel Brodhead Esq^t }
 Survt Genl

IN TESTIMONY that the above is a copy of the original remaining on file in the Department of Internal Affairs of Pennsylvania, made conformably to an Act of Assembly approved the 16th day of February, 1833, I have hereunto set my Hand and caused the Seal of said Department to be affixed at Harrisburg, this eighteenth day of October 1911

Nancy Howell
 Secretary of Internal Affairs.